



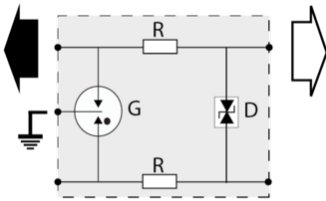
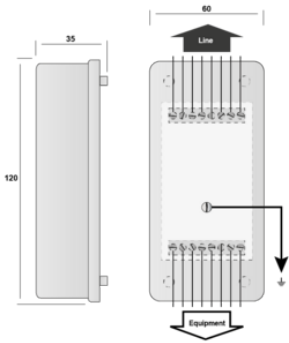
DATA LINE SPD - UL497B LISTED - I_{max} 20kA - I_n 5kA

CITEL

B480-T



- ↳ Hybrid SAD-GDT Technology
- ↳ UL497B LISTED
- ↳ 20kA I_{max}
- ↳ 5kA I_{mp}
- ↳ 5kA I_n



P: 3-electrode gas tube
 R: Resistor
 D: Clamping diode

Electrical Characteristics

Network		RTC, ADSL, SDSL, SHDSL
Max. DC operating voltage	U _c	170 Vdc
Max. frequency	f max.	> 10 MHz
Insertion loss		< 1 dB
Protection mode(s)		Common/Differential mode
DATA SPD TYPE		UL497B LISTED
VOLTS	(V)	150
WIRES		8W+GROUND
LINE CURRENT MAX	(A)	0.3
AMBIENT MIN	(C)	-50
AMBIENT MAX	(C)	+85
RESIDUAL VOLTAGE	(V)	20
MCOV	(V)	170
I _N	(kA)	5
<i>10 impulses 8/20µs</i>		
I _{MAX}	(kA)	20
<i>8/20µs</i>		
I _{imp}	(kA)	5
<i>10/350µs</i>		
DATA SPEED	(Mbps)	up to 10MHz

Mechanical Characteristics

Technology		GDT+Clamping diode
Connection to Network		By screw terminal: cross section 0.4-1.5mm ²
Format		Wall mounting box
Failsafe mode		Short-circuit - transmission cut-off - fault mode 2
Weight		0.138 kg
TECHNOLOGY		SAD-GDT
NETWORK CONFIGURATION		8W+G
CONNECTION METHOD		RJ11 Connector
MOUNTING		Wall mount
MATERIAL		Thermoplastic UL94-V0
NEMA RATING (IP RATING)		NEMA 2 (IP20)
DIMENSIONS		See diagram
WEIGHT		0.30 lbs
SPARE PART		n/a

Standards

Certification		UL listed
UL STANDARD		UL497B
UL CATEGORY		QVGQ
UL FILE NUMBER		E184939
STANDARDS		IEC 61643-11, NOM-003-SCFI-2014, NOM-001-SCFI-1993
ENVIRONMENTAL STANDARDS		ROHS

Part number

72746

