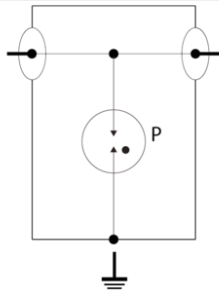
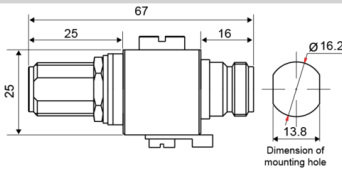


## P8AX25-6G-N/FF



- Gas Discharge Tube Technology, DC Pass
- Frequency Range 0-6.9GHz
- I<sub>max</sub> 20kA, 10kA (UL), I<sub>n</sub> 10kA
- IP67 Outdoor Rated
- N-Type Connector
- Bi-Directional
- Replaceable Gas Tube



| Electrical Characteristics                      |                |  |                         |
|---|----------------|--|-------------------------|
| Max. DC operating voltage                       | Uc             |  | 200 Vdc                 |
| Frequency range                                 | f              |  | DC-7 GHz                |
| Insertion loss                                  |                |  | < 0.2 dB                |
| Return loss                                     |                |  | > 19 dB                 |
| Impedance                                       |                |  | 50 ohms                 |
| VSWR  |                |  | <1.25:1                 |
| Max. load current @25°C                         | IL             |  | 10 A                    |
| Protection mode(s)                              |                |  | Common mode             |
| Impulse current 2 x 10/350µs Test - D1 Category | Iimp           |  | 1 kA                    |
| Nominal discharge current C2 Category           | I <sub>n</sub> |  | 5 kA                    |
| Max Power                                       |                |  | 190 W                   |
| DC Pass   |                |  | Yes                     |
| Insulation resistance                           | IR             |  | ≥10 GOhms               |
| RF SPD TYPE                                     |                |  | UL497E LISTED           |
| VOLTS   | (V)            |  | 48                      |
| AC/DC/DC PV/RF                                  |                |  | RF                      |
| WIRES   |                |  | 1W+GROUND               |
| LINE CURRENT MAX                                | (A)            |  | 10                      |
| POWER RATING                                    | (W)            |  | 240                     |
| AMBIENT MIN                                     | (C)            |  | -40                     |
| AMBIENT MAX                                     | (C)            |  | +85                     |
| RESIDUAL VOLTAGE                                | (V)            |  | 1000                    |
| IMAX 8/20µs                                     | (kA)           |  | 20                      |
| FREQUENCY RANGE                                 | (GHz)          |  | 0-6.9                   |
| INSERTION LOSS (@ FREQ)                         | (db)           |  | <0.2                    |
| RETURN LOSS                                     | (db)           |  | >22                     |
| VSWR  |                |  | <1.25:1                 |
| IMPEDANCE                                       | Ω              |  | 50                      |
| Installation                                    |                |  |                         |
| Operating Temperature <sub>Min</sub>            | °C             |  | -45.0000                |
| Operating Temperature <sub>Max</sub>            | °C             |  | 85.0000                 |
| Operating Temperature <sub>Min</sub>            | °F             |  | -50.0000                |
| Operating Temperature <sub>Max</sub>            | °F             |  | 85.0000                 |
| Operating Relative Humidity <sub>Max</sub>      | %RH            |  | Can be submerged        |
| Operating Altitude <sub>Min</sub>               | Ft             |  | 2000.0000               |
| Operating Altitude <sub>Max</sub>               | Ft             |  | 6500.0000               |
| Housing/Enclosure material                      |                |  | Cu, Zn, Sn plated Brass |
| Mounting  |                |  | Bracket or through hole |
| IP Environmental rating <sub>IP</sub>           |                |  | IP65                    |
| NEMA Environmental rating <sub>NEMA</sub>       |                |  | NEMA 4                  |
| Installation Location                           |                |  | Indoor / outdoor        |
| Spare part                                      |                |  | BA HF 250/20            |
| Accessories                                     |                |  | BK                      |
| Product Dimension <sub>L</sub>                  | mm             |  | 67.0000                 |
| Product Dimension <sub>H</sub>                  | mm             |  | 25.0000                 |
| Product Dimension <sub>W</sub>                  | mm             |  | 13.8000                 |
| Product Dimension <sub>L</sub>                  | In             |  | 2.6400                  |
| Product Dimension <sub>H</sub>                  | In             |  | 0.9800                  |
| Product Dimension <sub>W</sub>                  | In             |  | 0.5400                  |
| Miscellaneous                                   |                |  |                         |
| Individual Pack                                 |                |  | No                      |
| Storage Temperature <sub>Min</sub>              | °C             |  | -40.0000                |
| Storage Temperature <sub>Max</sub>              | °C             |  | 85.0000                 |

**- UL497E LISTED - I<sub>max</sub> 20kA (10kA UL) - I<sub>n</sub> 10kA (10kA UL) - Bi-directional - Replaceable Gas Tube**

**P8AX25-6G-N/FF**

|                                    |    |                                      |
|------------------------------------|----|--------------------------------------|
| Storage Temperature <sub>Min</sub> | °F | -40.0000                             |
| Storage Temperature <sub>Max</sub> | °F | 85.0000                              |
| <b>Mechanical Characteristics</b>  |    |                                      |
| Technology                         |    | Gas discharge tube                   |
| Connection to Network              |    | Connector N Female/Female            |
| Failsafe mode                      |    | Short-circuit                        |
| Contacts                           |    | Bronze/Surface Au-Ag                 |
| Weight                             |    | 0.165 kg                             |
| TECHNOLOGY                         |    | GDT                                  |
| CONNECTION METHOD                  |    | SERIES CONNECTOR, BI-DIRECTIONAL     |
| CONNECTOR TYPE                     |    | N                                    |
| GENDER                             |    | FEMALE TO FEMALE                     |
| MOUNTING                           |    | BULKHEAD, OPTIONAL BRACKET           |
| MATERIAL                           |    | Cu, Zn, Sn plated Brass, PTFE        |
| NEMA RATING (IP RATING)            |    | NEMA 6P (IP67)                       |
| DIMENSIONS                         |    | See diagram                          |
| WEIGHT                             |    | 0.30 lbs                             |
| SPARE PART                         |    | BA HF 250/20                         |
| <b>Standards</b>                   |    |                                      |
| RohS compliance                    |    | Yes                                  |
| UL STANDARD                        |    | UL497E                               |
| UL CATEGORY                        |    | QVLA                                 |
| UL FILE NUMBER                     |    | E349646                              |
| STANDARDS                          |    | NOM-003-SCFI-2014, NOM-001-SCFI-1993 |
| ENVIRONMENTAL STANDARDS            |    | ROHS                                 |
| <b>Part number</b>                 |    |                                      |
| <b>68014</b>                       |    |                                      |