

**1° Géométrie: suivant plan**  
**Geometry: See drawing**

SCOE.01.0005

**2° Caractéristiques initiales**

**Primary Technical Properties: (before test)**

Tension et limites: Tension and limits:		65V-95V	90V/20	150V/20	207V-230V	230V/15
Tension statique: DC Spark-over Voltage:	100V/s	65V-95V	72V-108V	120V-180V	207V-230V	195V-265V
Tension dynamique: Impulse Spark-over Voltage:	1kV/μs	≤640V	≤640V	≤640V	≤700V	≤700V
Résistance isolement: Insulation Resistance:	≤90V ≥90V 50V DC 100V DC	≥10GΩ	≥10GΩ	≥10GΩ	≥10GΩ	≥10GΩ
Capacité: Capacitance:	1MHz	≤0.8pF	≤0.8pF	≤0.8pF	≤0.8pF	≤0.8pF
Tension d extinction: Holdover Voltage:	RC//:150Ω- 100nF;RS=330Ω	≥60V	≥60V	≥75V	≥80V	≥80V
Tension de lueur: Glow Voltage:		≤80V	≤80V	≤80V	≤100V	≤100V
Tension d arc Arc Voltage:		≤25V	≤25V	≤25V	≤25V	≤25V

**3° Pouvoir d écoulement: (après tests)**

**Power-flow Properties: (after life test)**

Tension statique: DC Spark-over Voltage:		65V-95V	72V-108V	120V-180V	207-230V	195V-265V
Tension dynamique: Impulse Spark-over Voltage:		≤640V	≤640V	≤640V	≤700V	≤700V
Résistance isolement: Insulation Resistance:		≥1000MΩ	≥1000MΩ	≥1000MΩ	≥1000MΩ	≥1000MΩ
Décharge Alternative AC discharge current:	50/60Hz,600V 5times,1s interval 3min	10A	10A	10A	10A	10A
Décharge Impulsionnelle Impulse discharge current:	8/20μs +5/-5,interval 3min	10kA	10kA	10kA	10kA	10kA
Décharge Impulsionnelle Impulse discharge current:	8/20μs 1time	25kA	25kA	25kA	25kA	25kA
Décharge Impulsionnelle Impulse discharge current:	10/350μs 1time	2KA	2KA	2KA	2KA	2KA
Décharge Impulsionnelle Impulse life:	10/1000μs 300times,interval 2min	100A	100A	100A	100A	100A

**4° Code:**

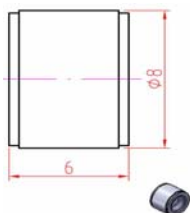
**Part number:**

	9280049	9280001	9280002	9280012	9280007
QVGQ2.E184939	YES	YES	YES	YES	YES
REG.-Nr.40008209					

1. Solderability see CEI 68-2-20

2. This product is 2002/95/EC directive(ROHS);all test are ITU-T K.12 compliant.

Date	Code N°
2009-5-14	92 800 XX XX



**1° Géométrie: suivant plan**  
**Geometry: See drawing**

SCOE.01.0005

**2° Caractéristiques initiales**

**Primary Technical Properties: (before test)**

Tension et limites: Tension and limits:		230V/20	240V/15	250V/12	250V/20	260V/20
Tension statique: DC Spark-over Voltage:	100V/s	184V-276V	204V-276V	220V-280V	200V-300V	208V-312V
Tension dynamique: Impulse Spark-over Voltage:	1kV/μs	≤700V	≤700V	≤750V	≤750V	≤750V
Résistance isolement: Insulation Resistance:	≤90V ≥90V 50V DC 100V DC	≥10GΩ	≥10GΩ	≥10GΩ	≥10GΩ	≥10GΩ
Capacité: Capacitance:	1MHz	≤0.8pF	≤0.8pF	≤0.8pF	≤0.8pF	≤0.8pF
Tension d extinction: Holdover Voltage:	RC//:150Ω- 100nF;RS=330Ω	≥80V	≥80V	≥80V	≥80V	≥80V
Tension de lueur: Glow Voltage:		≤100V	≤100V	≤100V	≤100V	≤100V
Tension d arc Arc Voltage:		≤25V	≤25V	≤25V	≤25V	≤25V



**3° Pouvoir d écoulement: (après tests)**

**Power-flow Properties: (after life test)**

Tension statique: DC Spark-over Voltage:		184V-276V	204V-276V	220V-280V	200V-300V	208V-312V
Tension dynamique: Impulse Spark-over Voltage:		≤700V	≤700V	≤750V	≤750V	≤750V
Résistance isolement: Insulation Resistance:		≥1000MΩ	≥1000MΩ	≥1000MΩ	≥1000MΩ	≥1000MΩ
Décharge Alternative AC discharge current:	50/60Hz,600V 5times,1s interval 3min	10A	10A	10A	10A	10A
Décharge Impulsionnelle Impulse discharge current:	8/20μs +5/-5,interval 3min	10kA	10kA	10kA	10kA	10kA
Décharge Impulsionnelle Impulse discharge current:	8/20μs 1time	25kA	25kA	25kA	25kA	25kA
Décharge Impulsionnelle Impulse discharge current:	10/350μs 1time	2KA	2KA	2KA	2KA	2KA
Décharge Impulsionnelle Impulse life:	10/1000μs 300times,interval 2min	100A	100A	100A	100A	100A

**4° Code:**

**Part number:**

	9280057	9280008	9280009	9280059	9280010
QVGQ2.E184939	YES	YES	YES	YES	YES
					
REG.-Nr.40008209					

1. Solderability see CEI 68-2-20

2. This product is 2002/95/EC directive(ROHS);all test are ITU-T K.12 compliant.

Date	Code N°
2009-5-14	92 800 XX XX



**1° Géométrie: suivant plan**  
**Geometry: See drawing**

SCOE.01.0005

**2° Caractéristiques initiales**

**Primary Technical Properties: (before test)**

Tension et limites: Tension and limits:		350V/20	350V/20	420V/15	470V/20	500V/20
Tension statique: DC Spark-over Voltage:	100V/s	280V-420V	280V-420V	357V-435V	376V-564V	400V-600V
Tension dynamique: Impulse Spark-over Voltage:	1kV/μs	≤850V	≤850V	≤1000V	≤1100V	≤1200V
Résistance isolement: Insulation Resistance:	≤90V ≥90V 50V DC 100V DC	≥10GΩ	≥10GΩ	≥10GΩ	≥10GΩ	≥10GΩ
Capacité: Capacitance:	1MHz	≤0.8pF	≤0.8pF	≤0.8pF	≤0.8pF	≤0.8pF
Tension d extinction: Holdover Voltage:	RC//:150Ω- 100nF;RS=330Ω	≥80V	≥80V	≥80V	≥80V	≥80V
Tension de lueur: Glow Voltage:		≤100V	≤120V	≤120V	≤120V	≤120V
Tension d arc Arc Voltage:		≤25V	≤25V	≤25V	≤25V	≤25V



**3° Pouvoir d écoulement: (après tests)**

**Power-flow Properties: (after life test)**

Tension statique: DC Spark-over Voltage:		280V-420V	280V-420V	357V-435V	376V-564V	400V-600V
Tension dynamique: Impulse Spark-over Voltage:		≤850V	≤850V	≤1000V	≤1100V	≤1200V
Résistance isolement: Insulation Resistance:		≥1000MΩ	≥1000MΩ	≥1000MΩ	≥1000MΩ	≥1000MΩ
Décharge Alternative AC discharge current:	50/60Hz,600V 5times,1s interval 3min	10A	5A	10A	10A	10A
Décharge Impulsionnelle Impulse discharge current:	8/20μs +5/-5,interval 3min	10kA	5kA	10kA	10kA	10kA
Décharge Impulsionnelle Impulse discharge current:	8/20μs 1time	25kA	10kA	25kA	25kA	25kA
Décharge Impulsionnelle Impulse discharge current:	10/350μs 1time	2KA	2KA	2KA	2KA	2KA
Décharge Impulsionnelle Impulse life:	10/1000μs 300times,interval 2min	100A	50A	100A	100A	100A

**4° Code:**

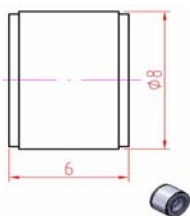
**Part number:**

						
QVGQ2.E184939	YES		YES	YES		
						
REG.-Nr.40008209						

1. Solderability see CEI 68-2-20

2. This product is 2002/95/EC directive(ROHS);all test are ITU-T K.12 compliant.

Date	Code N°
2009-5-14	92 800 XX XX



### 1° Géométrie: suivant plan

Geometry: See drawing

SCOE.01.0005

### 2° Caractéristiques initiales

**Primary Technical Properties:** (before test)

Tension et limites:		<b>600V/15</b>
Tension and limits:		
Tension statique:	100V/s	510V-690V
DC Spark-over Voltage:		
Tension dynamique:	1kV/μs	≤ 1200V
Impulse Spark-over Voltage:		
Résistance isolement:	≤ 90V ≥ 90V	≥ 10GΩ
Insulation Resistance:	50V DC 100V DC	
Capacité:	1MHz	≤ 0.8pF
Capacitance:		
Tension d extinction:	RC//:150Ω-100nF;RS=330Ω	≥ 80V
Holdover Voltage:		
Tension de lueur:		≤ 120V
Glow Voltage:		
Tension d arc		≤ 25V
Arc Voltage:		

### 3° Pouvoir d écoulement: (après tests)

**Power-flow Properties:** (after life test)

Tension statique:		510V-690V
DC Spark-over Voltage:		
Tension dynamique:		≤ 1200V
Impulse Spark-over Voltage:		
Résistance isolement:		≥ 1000MΩ
Insulation Resistance:		
Décharge Alternative	50/60Hz,600V	10A
AC discharge current:	5times,1s interval 3min	
Décharge Impulsionnelle	8/20μs	10kA
Impulse discharge current:	+5/-5,interval 3min	
Décharge Impulsionnelle	8/20μs	25kA
Impulse discharge current:	1time	
Décharge Impulsionnelle	10/350μs	2KA
Impulse discharge current:	1time	
Décharge Impulsionnelle	10/1000μs	100A
Impulse life:	300times,interval 2min	

### 4° Code:

9280076

### Part number:



QVGQ2.E184939



REG.-Nr.40008209

1. Solderability see CEI 68-2-20

2. This product is 2002/95/EC directive (ROHS); all test are ITU-T K.12 compliant.

Date	Code N°
2009-5-14	92 800 XX XX